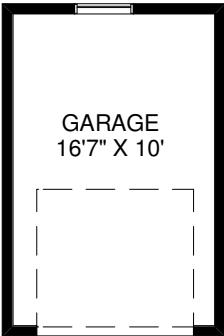
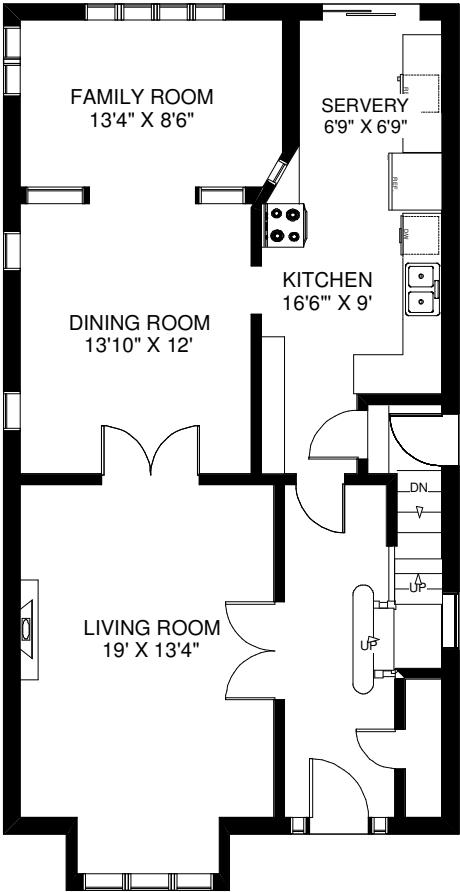


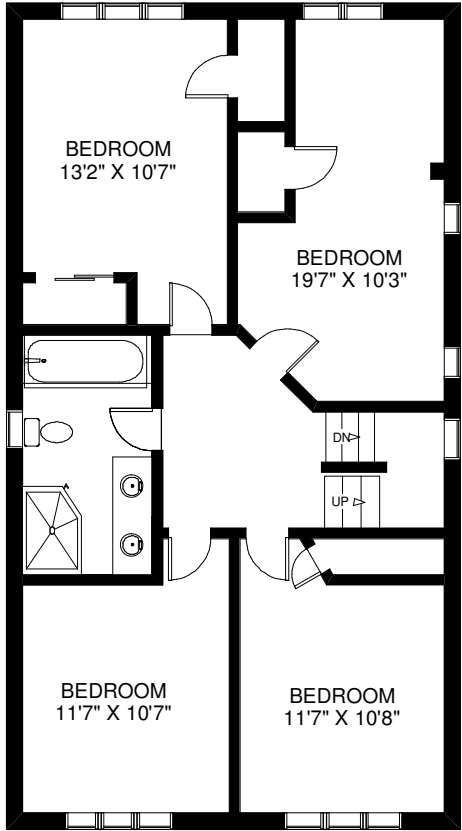
290 RUNNYMEDE ROAD



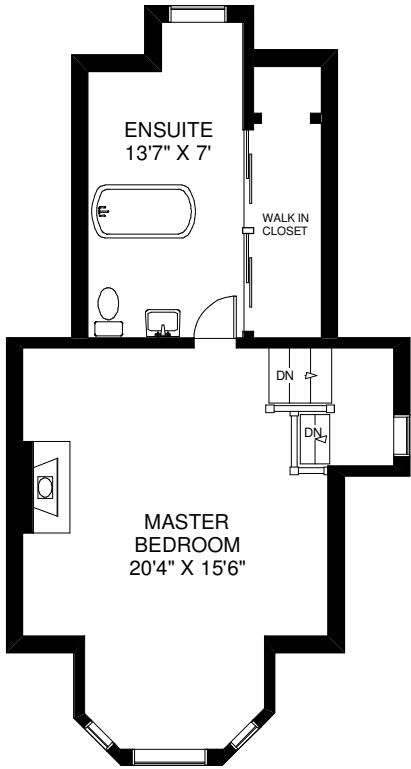
WALK OUT TO DECK
13' X 14'



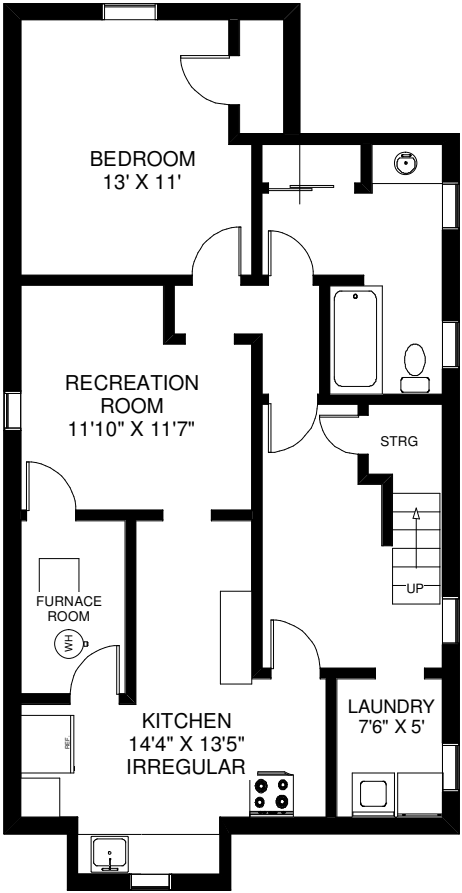
MAIN FLOOR
APPROXIMATELY 1,000 SQ FT



SECOND FLOOR
APPROXIMATELY 975 SQ FT



THIRD FLOOR
APPROXIMATELY 560 SQ FT



LOWER FLOOR
APPROXIMATELY 950 SQ FT

Note: Measurements & Calculations are approximate. Provided as a guideline only.