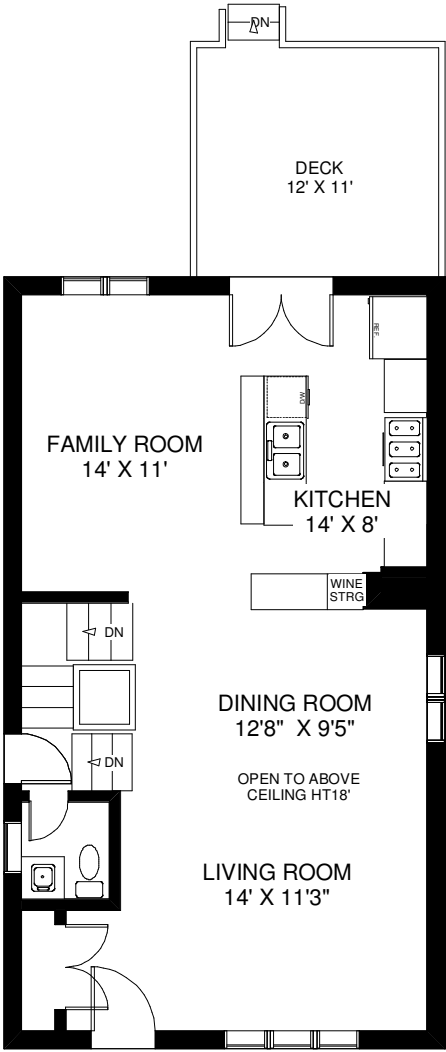
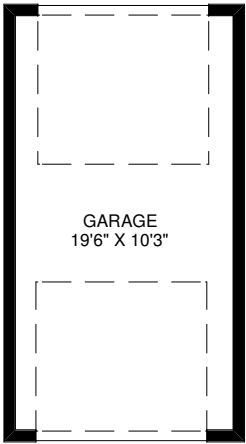
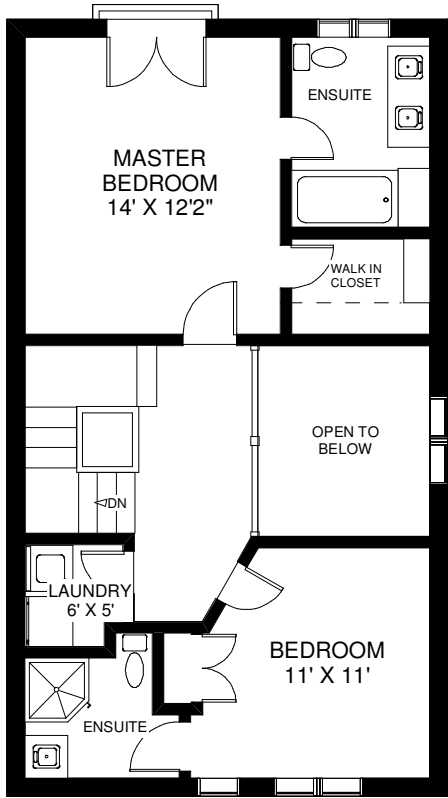


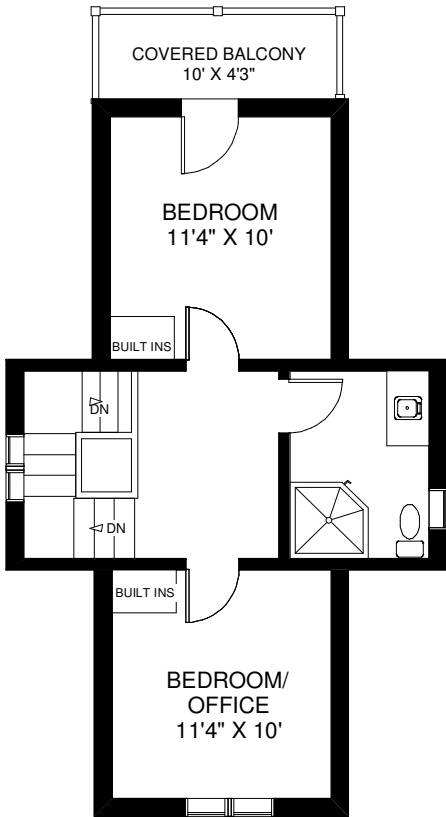
506 DURIE STREET



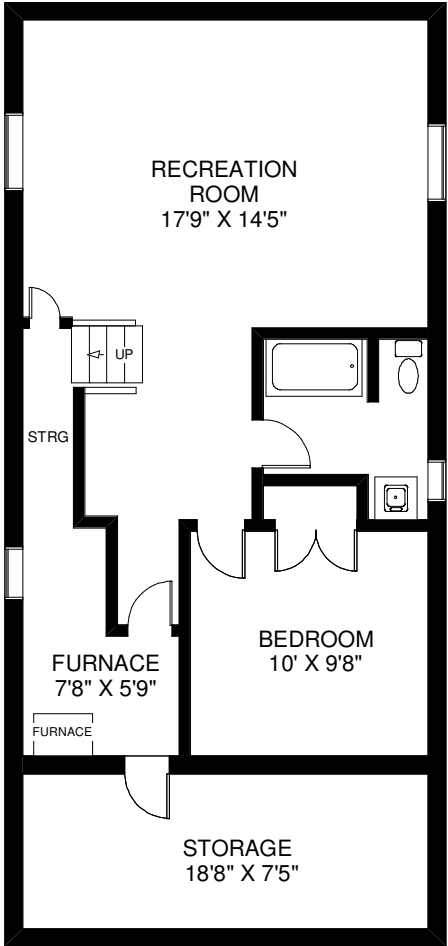
CEILING HT 9'
MAIN FLOOR
 APPROXIMATELY 750 SQ FT



CEILING HT 8'
SECOND FLOOR
 APPROXIMATELY 700 SQ FT



CEILING HT 7'8"
THIRD FLOOR
 APPROXIMATELY 490 SQ FT



CEILING HT 8'
LOWER FLOOR
 APPROXIMATELY 900 SQ FT

Note: Measurements & Calculations are approximate. Provided as a guideline only.