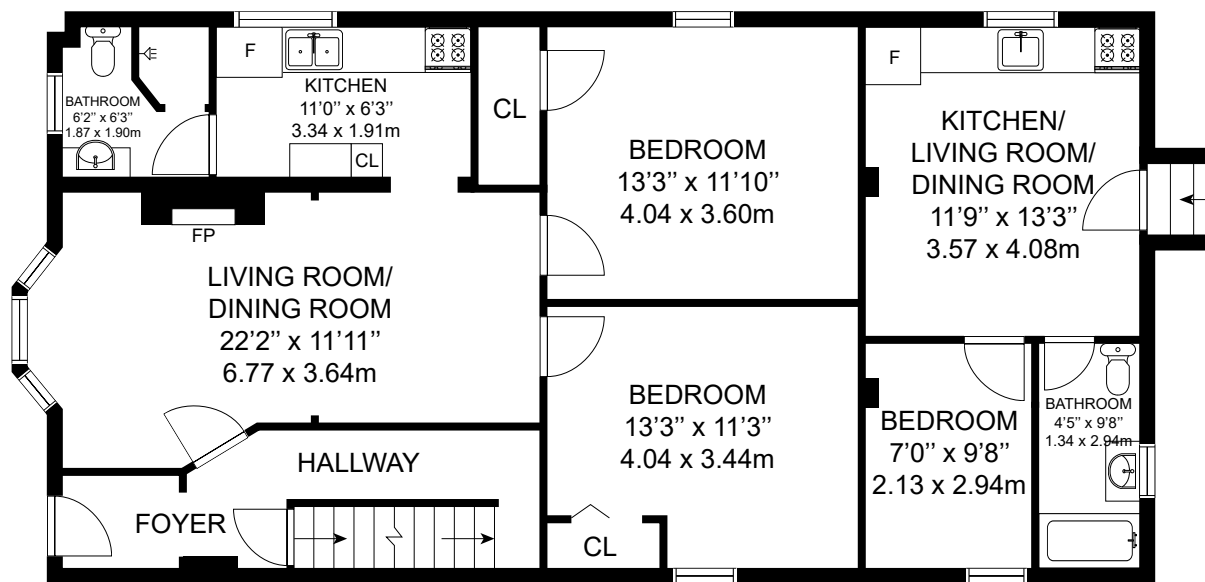
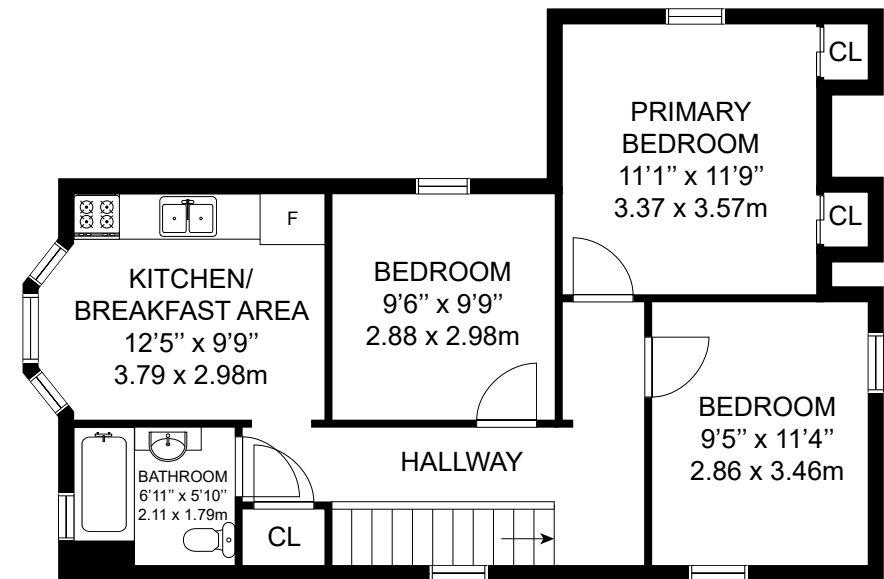


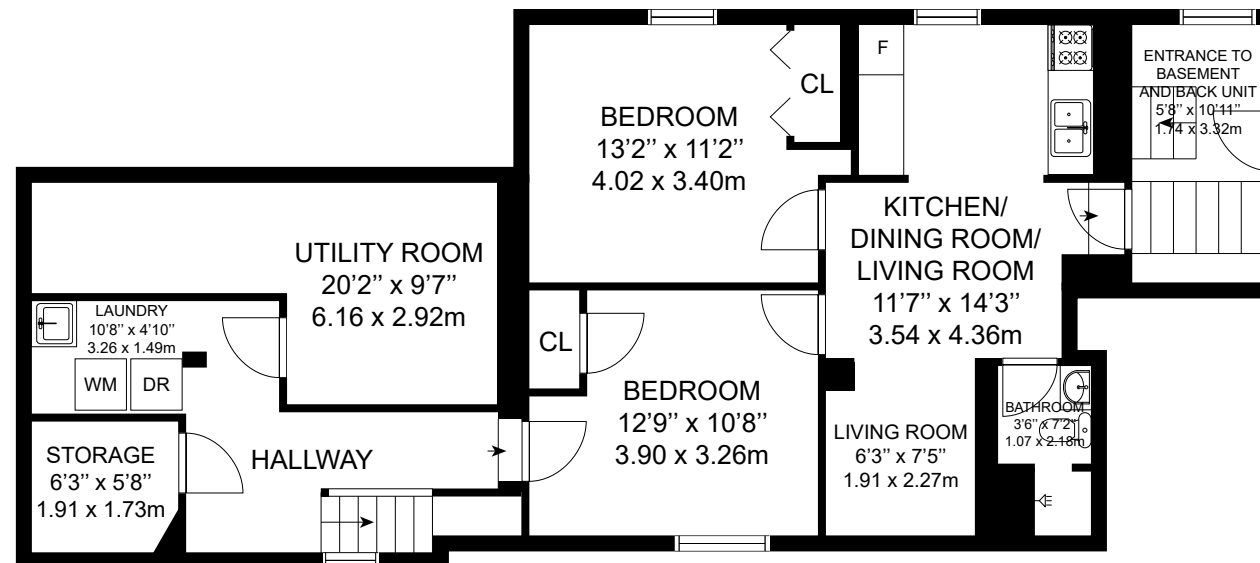
632 DURIE STREET



MAIN FLOOR



2ND FLOOR



BASEMENT

GROSS INTERNAL AREA
BASEMENT: 1088 sq. ft, MAIN FLOOR: 1192 sq. ft
2ND FLOOR: 719 sq. ft
TOTAL: 2999 sq. ft

MEASUREMENTS AND CALCULATIONS ARE APPROXIMATE, TO BE USED AS LAYOUT GUIDELINES AND ILLUSTRATIVE PURPOSES ONLY. ACTUAL MAY DIFFER.